



Connecticut
Landmarks

NEWS

Events/Calendar Release

Connecticut Landmarks

Main Office

255 Main Street 4th Floor

Hartford, CT 06106

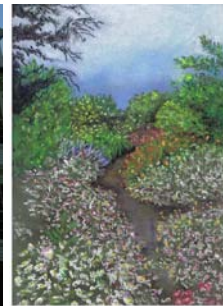
(860) 247-8996

www.ctlandmarks.org

Date: June 23, 2010

Contact: Kristin Havill, Site Administrator, Bellamy-Ferriday House & Garden,
(203) 266-7596, bellamy.ferriday@ctlandmarks.org
Jamie-Lynn Fontaine, Marketing & Development Associate
(860) 247-8996 x .23, jamie.fontaine@ctlandmarks.org

Linda Cookson Art Exhibition & Opening Reception at the Bellamy-Ferriday House & Garden



Bethlehem, CT- Connecticut Landmarks' Bellamy-Ferriday House & Garden will host an exhibition of works by Linda Cookson, a graphic designer and artist who resides in Morris, Connecticut and has had an interest in painting since childhood. Primarily self taught, Cookson has taken classes and workshops exploring oil and acrylic painting. Four years ago she attended her first watercolor workshop at the Bellamy-Ferriday House & Garden and has been passionate about the medium ever since. She continues her studies in Bethlehem, at Lilly Hill Studio. Cookson's exhibition is a mix of botanicals, landscapes, portraits and animal life paintings.

The exhibition will be held from Wednesday, July 21st through Sunday, September 6th and is open to the public during regular museum hours. The exhibit's opening reception will be held on Friday, July 23rd from 5 – 7pm.

The Bellamy-Ferriday House & Garden, located at 9 Main Street North, Bethlehem is open May 1st through October 11th. Hours are as follows: May – August, Wednesday, Friday, Saturday and Sunday, 11am – 4pm; September – October, Friday, Saturday and Sunday 11am – 4pm. Open on Monday Holidays: Memorial Day, Labor Day and Columbus Day. Admission is \$7 for adults; \$6 for students, teachers and seniors; \$4 for children age 6-18; children under 6 and Connecticut Landmarks' members are free. Families, 2 adults with children, are \$15; groups of 10 or more are \$5 each. For school groups and special curriculum-based programming, to reserve tours for groups of 10 or more, or to rent the facility, please call the Bellamy-Ferriday House & Garden at (203) 266-7596.

About the Bellamy-Ferriday House & Garden

The Bellamy-Ferriday House & Garden embodies the dramatically different passions of two extraordinary individuals. Bethlehem pastor Rev. Joseph Bellamy, a renowned leader of the Great Awakening, the emotional religious revival of the 1740s, built the house around 1754. In 1912, New Yorkers Henry and Eliza Ferriday acquired it as a summer residence. Around 1915, Mrs. Ferriday and her daughter, Caroline, designed a formal garden which today features historic-style roses, peonies, and lilacs.

About Connecticut Landmarks

Founded in 1936, Connecticut Landmarks, formerly known as the Antiquarian & Landmarks Society, is the largest state-wide heritage museum organization in Connecticut. The historic landmark properties include: the Amasa Day House, Moodus; the Amos Bull House in Hartford; the Bellamy-Ferriday House & Garden, Bethlehem; the Butler-McCook House & Garden and Main Street History Center, Hartford; the Buttolph-Williams House, Wethersfield; the Hempsted Houses, New London; the Isham-Terry House, Hartford; the Nathan Hale Homestead, Coventry; and the Phelps-Hatheway House & Garden, Suffield.

Connecticut Landmarks' mission is to inspire interest and encourage learning about the American past by preserving selected historic properties, collections and stories and presenting programs that meaningfully engage the public and our communities. For more information, please visit www.ctlandmarks.org.

Photos:

Aspen Trees and *Spring Path*. Paintings by Linda Cookson.

Bellamy-Ferriday House & Garden. Photo by Nick Lacy.

###